



First Year 2026 – 2027



Settling into post-primary school (1)

- Key milestone in a young person's life
- Likely to feel very grown up, excited, nervous ...

Challenges

- New friends
- Amongst the youngest students in the school
- A new and larger school
- A longer day, faster pace
- More teachers and subjects
- Organization of materials
- More adult interactions with teachers
- Learning styles
- AEN/Special Class application



Settling into post-primary school (2)

- Some students take longer to settle than others.
- Having friends from primary school or having an older sibling in the school may help students to settle.
- Involvement in extra-curricular activities is very helpful
- Need to 'keep an eye' and a 'listening ear'.
- Any concerns, contact us.



Settling into post-primary school (3)

- Initially, a high level of support and supervision is required
- Homework should be fully completed and brought to school
- Quality of homework is key
- Assign a suitable place for completing h/w
- Planning for class materials (each day is different)
- Have 3 copies of timetable
- Using the School Journal
- Google Classroom



Support and Guidance

- Induction day on first day of term, only First Year students in school
- Some First Year students may be assigned a 'Go To' adult.
- 'One Good Adult' initiative continues as deemed necessary through time in school.
- Children First: A safe school is our priority

Support and Guidance (2)

- Class Tutor
- Year Head
- Guidance Counsellors
- Chaplain
- AEN Department
- Special Class Coordinators
- SNAs



Mobile Phones

- School policy: Phones must be switched off and out of sight
- Students may contact their parents/guardians through the school office
- Do not text/phone your son/daughter during the school day
- Students do not require phones to do homework at Junior Cycle



Mobile Phones (2)

- Talk to your child about safe/prudent use of mobile phones
- Encourage your child to relax in ways that don't involve using a device
- No devices in room when studying
- All devices downstairs after an agreed time
- Consider using a filtering/management system



Mobile Phones (3)

The Anxious Generation by
Jonathan Haidt.

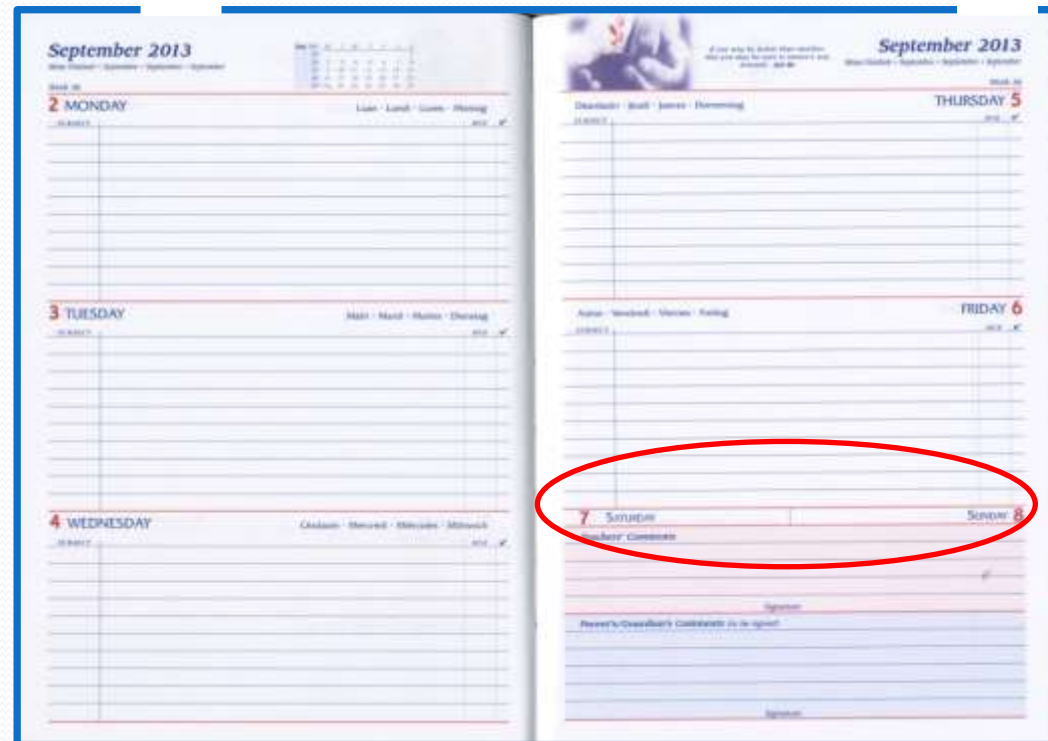
Link to the author's interview with
Brendan O'Connor on RTE:

<https://www.rte.ie/radio/radio1/clips/22485306/>



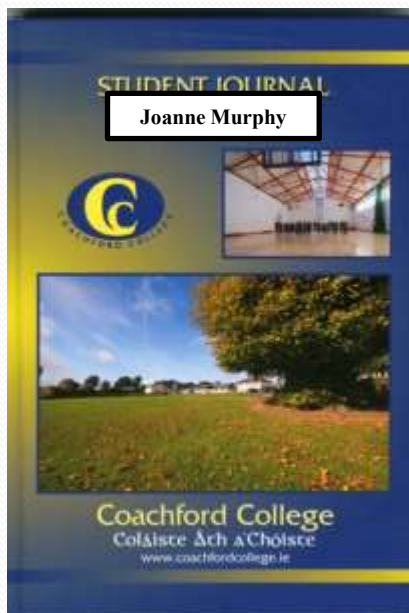
School Journal

- Used to record homework, and other reminders as necessary.
- Teachers may write notes in the journal for parents/guardians to countersign
- Parents/guardians are asked to check their child's journal daily
- Grafitti etc., is not allowed on the journal



School Journal

- Notes from parent/guardian to explain late arrivals and early departures are recorded at the end of the journal.
- Notes explaining full day absences are written into the journal
- Parents/guardians can log on to VSware & monitor their child's attendance



EXPLANATIONS FOR ABSENCE

Student Name: _____ Class: _____
Date of Absence From ____/____/20 To ____/____/20 No. of Days Absent

TICK RELEVANT BOX REASONS Illness Medical Appointment Urgent Family Reasons Please explain below Other Please explain below

Further Explanations: _____
Signature of Parent/Guardian: _____

EXPLANATIONS FOR ABSENCE

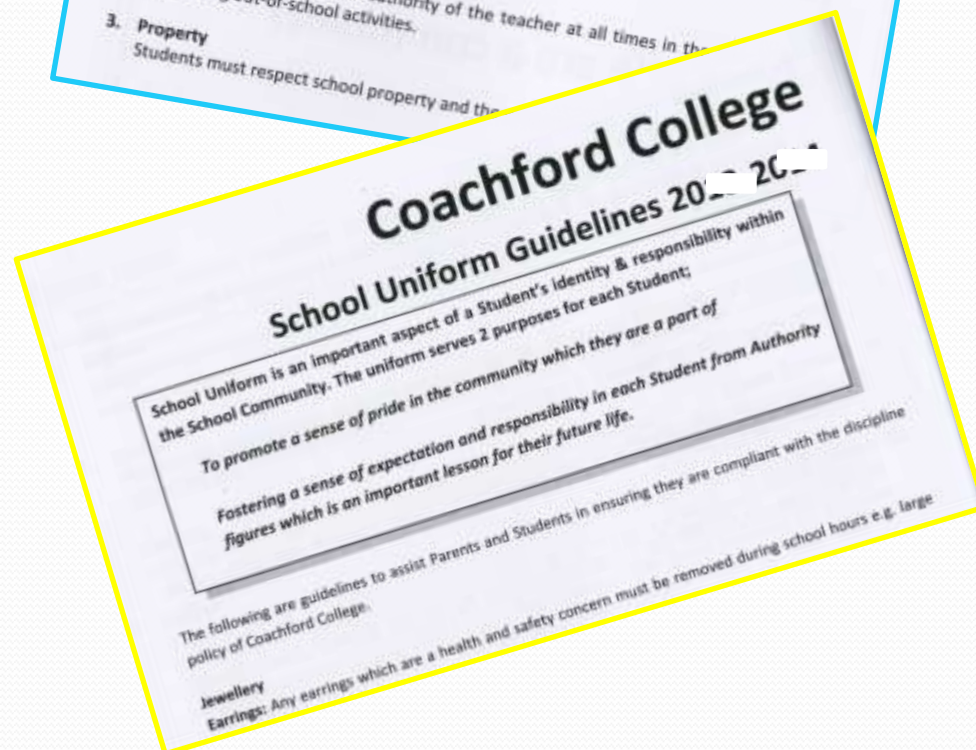
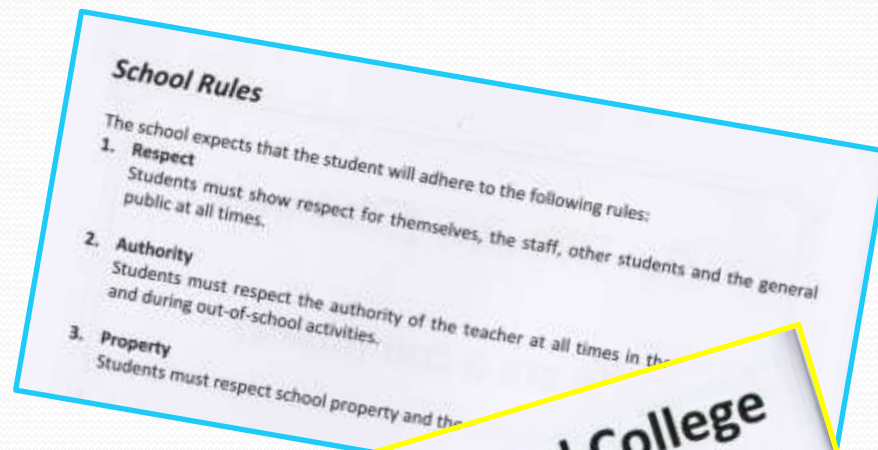
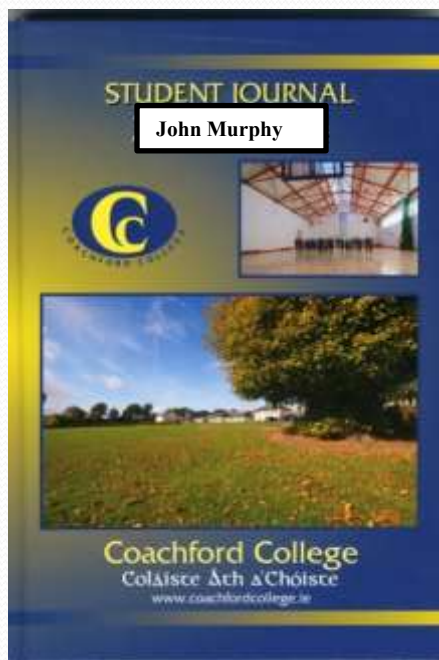
Student Name: _____ Class: _____
Date of Absence From ____/____/20 To ____/____/20 No. of Days Absent

TICK RELEVANT BOX REASONS Illness Medical Appointment Urgent Family Reasons Please explain below Other Please explain below

Further Explanations: _____
Signature of Parent/Guardian: _____

School Journal (2)

Contains additional information such as school rules, uniform code, map of 'in-bounds' areas in school grounds, etc.



Book Scheme

The Free Books Scheme will apply to all students
Stationery is given in one batch in September

1st Yr books can be collected at designated date in August



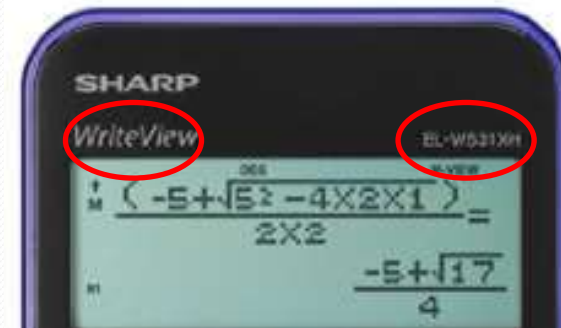
Organisation

Some students use zipped folders to keep books/copies for certain subjects together



CALCULATOR FOR MATHS

- SHARP EL-W531 Write View
- Letter W must be written on calculator
- Will be included in the Free Books Scheme. Every 1st Yr receives 1 calculator



Uniform (See Journal)

- Available from Mick Murphy, North Main Street, Cork and Hugh Twomey, Macroom.
- **Students may wear a navy unbranded raincoat over their uniform**
- **All students should own a school jumper.**
- **Read uniform guidelines on the website**
- **Points system**



PE Uniform

- Change for incoming 1st years
- Can wear their own dark tracksuit bottom/leggings and non marking runners
- Ensure everything is labelled.



Extra-Curricular

Activities

Activities include:

- Sports: Hurling, Football, Camogie, Ladies Football, Basketball, Soccer, Volleyball, Athletics, Equestrian, Golf, etc.
- BTYSE
- Scifest
- Camera Club
- Spanish Club
- Art Club
- Library
- Choir
- Trad Band
- School Tours e.g. Delphi in 2nd Year
- Theme Weeks
- Dance-Off



Lunch

- Students must stay in school at lunch.
- Healthy hot lunch, drinks, wraps and rolls are available for sale in the Balcony Bistro (Cashless/Fob)



Summary of Key Challenges

- Academic challenges
- Being organised
- Social/friends
- Mobile phone



Parents/Guardians:

- Stay involved & informed
- Monitor school work, h/w and journal
- Help with organisation
- Attend Parent-Teacher Meetings
- Parents' Council as key support
- Contact school if necessary

Finances

- No voluntary contribution
- Buses to matches and credits
 - Purchase in batches of 4
 - Statement issued every Friday
 - Top-up at least 2 school days before a match.

Roadmap of Activities

- Matches throughout year
- Stripe Young Scientist Expo, Jan of 1st Yr
- End of 1st Year school tour to Killarney
- 2nd Yr 2 night trip to Delphi (May of 2nd Yr)
- 4th Yr: 2 night in Gaeltacht (Sept) and 4 nights in Berlin (TBC) (March)

2nd Yr Overnight trip

- 2nd Yr students go to Delphi outdoor education centre for 2 nights
- Payments begin in 1st year.



Transition Year

- Optional year with 95% participation level
- Wide sampling of subjects
- Core subject leaving cert course at Higher Level
- Optional Trips to Gaeltacht and International Tour
- Planning for TY costs



Subject Choice: First Year

Core Subjects (Exam)	Core Wellbeing Subjects	Option Subjects
English	SPHE	Graphics
Irish	Religious Education	Wood Technology
Maths	PE	Engineering
History	CSPE	Visual Art
Geography	Digital Learning	Music
Science		
Home Economics		
French		
Business Studies		
Spanish		

Subject Choice: Second Year and Junior Cycle

Core Subjects (Exam)	Core Wellbeing Subjects	Option Subjects
English Irish Maths History Geography Science	SPHE Religious Education PE CSPE Digital Literacy Guidance	Home Economics Wood Technology Engineering Visual Art Music Graphics French Business Studies Spanish

Organisation of Class Groups: Second Year and Junior Cycle

Core		Options	
'Set' Subjects	'Mixed Ability' Subjects		
English	History	French	Home Economics
Irish	Geography	Visual Art	Wood Technology
Maths	Science	Music	Engineering
	Wellbeing Subjects	Spanish	Graphics
			Business Studies

Leaving Certificate

Core Subjects (Exam)	Option Subjects	
English Irish Maths	History Geography French Home Economics	Physics Chemistry Biology Agricultural Science
Core Subjects (Non-Exam)	Art Music Accounting Design and Communication Graphics Spanish	Applied Maths Engineering Construction Studies Business
Careers Religious Education PE SPHE		

Supports for Parents/Guardians

- VSWare – to track attendance and academic progress
- Attendance data
- Athena Tracker
- School Website
- Facebook/Instagram
- Parents' Council
- Staff are always available to help



Contacting the school

- If you have any concerns, please do not hesitate to contact the school.
- Please phone or email the office (Tel. 021-7334113 or info@office.coachfordcollege.ie) to arrange a meeting with the Year Head or any other member of staff.



Further information

1. www.coachfordcollege.ie
(Teaching and Learning, Policies, etc.)
2. Coachford College Parents' Council
3. www.ncca.ie
Subject specifications, etc.

